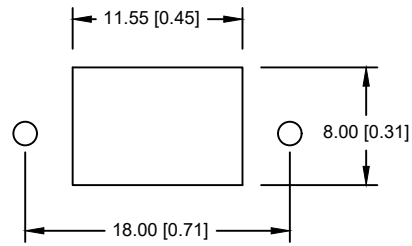
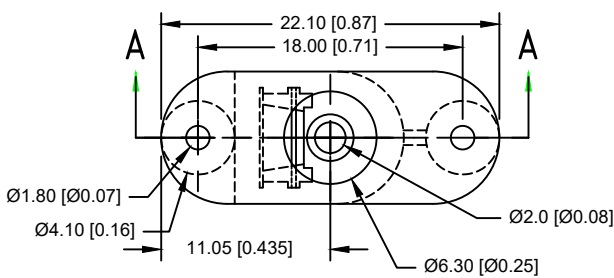
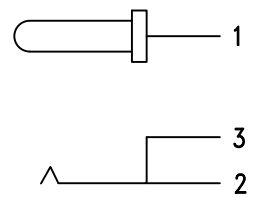
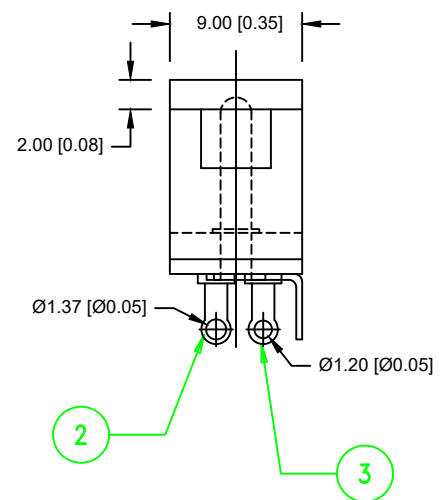
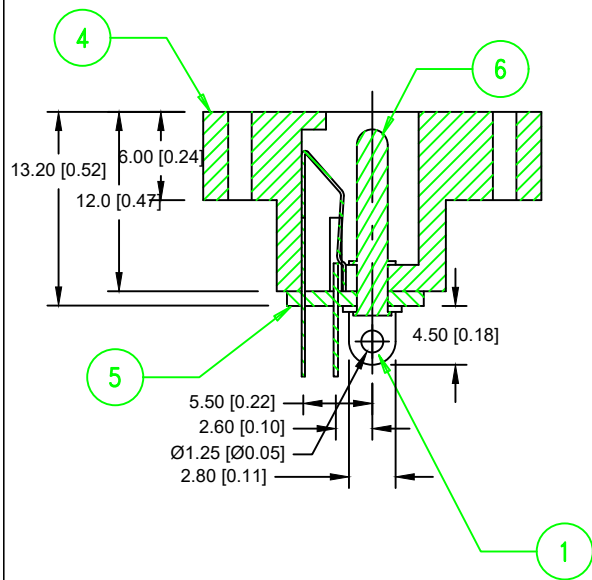


Date	SYM	REVISION RECORD	AUTH	DR.	CK.
11/22/23	F	Redrawn and updated all Dim.	D.L.	B.S.	
01/08/24	G	Added UL file no.	D.L.	B.S.	



PANEL CUT-OUT



SCHEMATIC DIAGRAM

ELECTRICAL SPECIFICATIONS:

1. LIFE: 10,000 INSERTION/WITHDRAWAL CYCLE MINIMUM
2. CONTACT RESISTANCE: 50mΩ MAXIMUM
3. INSULATION RESISTANCE: 1000mΩ MINIMUM
4. DIELECTRIC WITHSTANDING VOLTAGE: 500AC MAXIMUM
5. MAXIMUM RATING: 5A, 12V DC

ROHS COMPLIANT

ITEM NO.	PART NAME	MATL. SPECIFICATION	Tolerance (Except as noted)	MPD Memory Protection Devices, Inc 200 Broad Hollow Road, Farmingdale, New York 11735		
1	PIN TERMINAL	0.4 THK BRASS, SILVER PLTD.	decimal	Scale	Drawn By B.S. Approved By D.L.	
2	SLEEVE SPRING	0.2 THK PHOSPHORSCENT BRONZE, SILVER PLTD.				
3	BREAK TERMINAL	0.3 THK BRASS, SILVER PLTD.	±.5 (.020)	Title	DC JACK PANEL MOUNT TYPE	
4	HOUSING	BLACK, P.B.T., UL FILE #E59481, UL 94V-0				
5	INSULATOR	BAKELITE, NATURAL	Fractional	Date	Drawing Number	
6	PIN (Ø2.0)	COPPER, NICKLE PLTD.				
			Angular	01/08/24	EJ505A	
			± 3°			