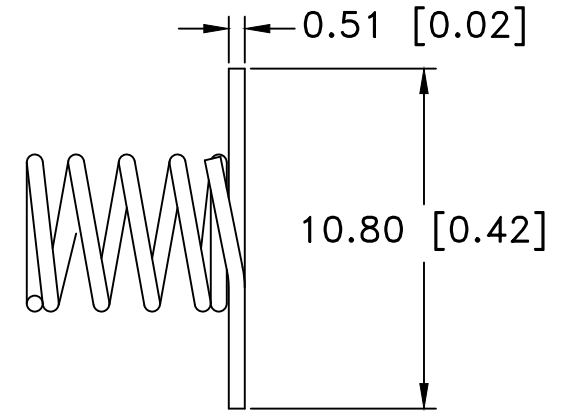
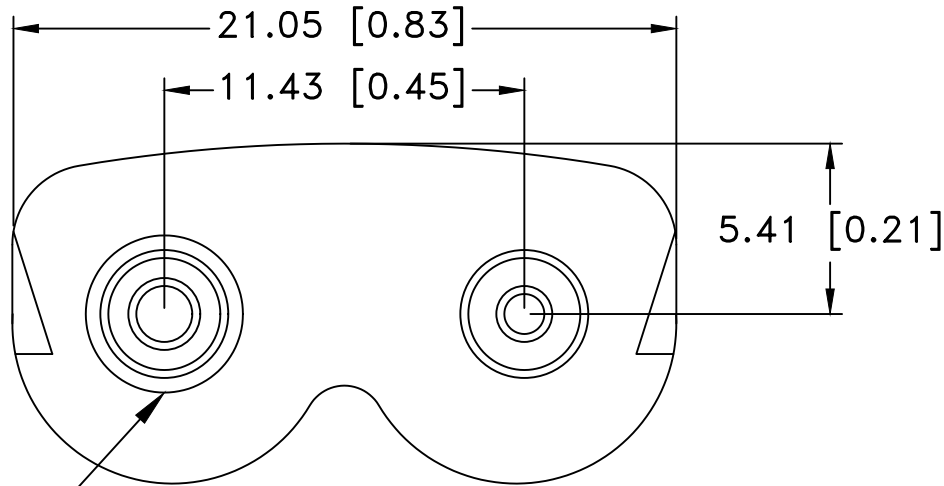


Date	SYM	REVISION RECORD	AUTH	DR.	CK.




SPRING

NOTES:

1. BASE PLATE: COLD ROLLED STEEL, NICKEL PLATED
2. RIVET: BRASS, TIN PLATED
3. SPRING: STEEL, NICKEL PLATED

ROHS COMPLIANT

Tolerance (Except as noted)	 <b>Memory Protection Devices, Inc</b> 200 Broad Hollow Road, Farmingdale, New York 11735		
decimal ±.5 (.020)		Scale	Drawn By B.S.
Fractional ± .8 (.030)	Title "AAA" BATTERY POSITIVE-NEGATIVE CONTACT		
Angular ± 3°	Date 06/07/19	Drawing Number BK-6181	
		Approved By T.B.	