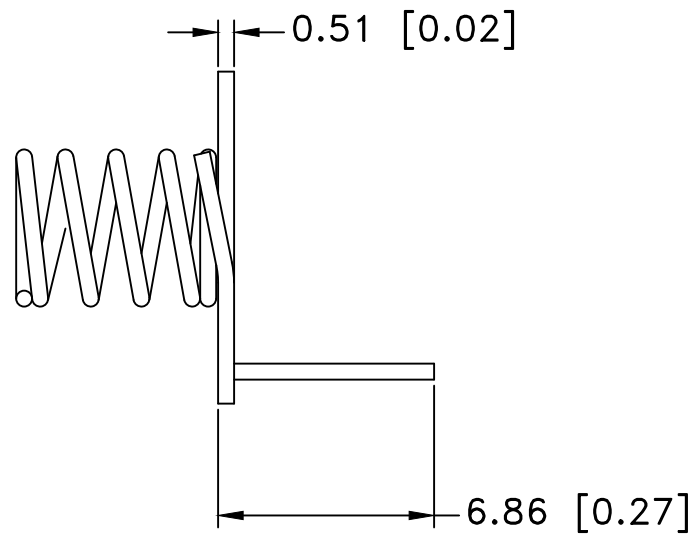
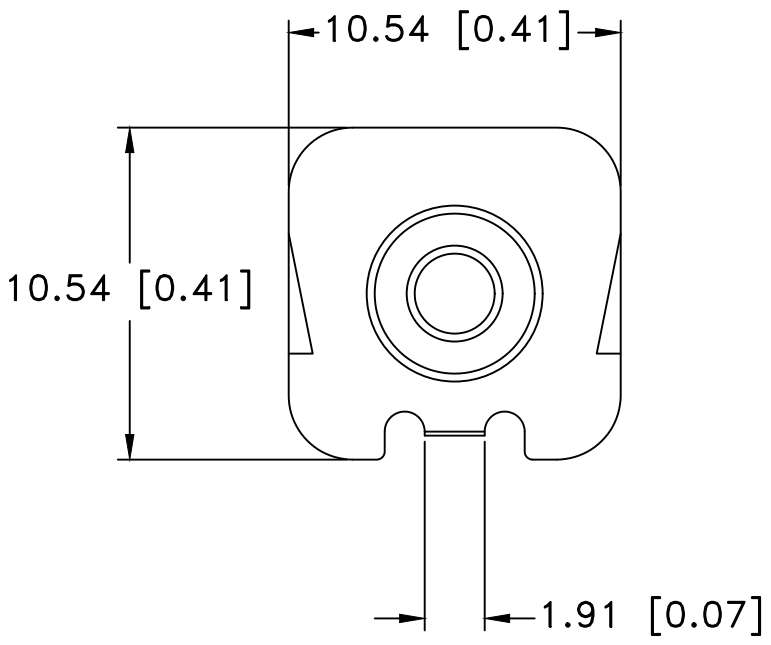



Date	SYM	REVISION RECORD	AUTH	DR.	CK.



- NOTES:
1. BASE PLATE: COLD ROLLED STEEL, NICKEL PLATED
  2. RIVET: BRASS, TIN PLATED
  3. SPRING: STEEL, NICKEL PLATED

ROHS COMPLIANT

Tolerance (Except as noted)	 <b>Memory Protection Devices, Inc</b> 200 Broad Hollow Road, Farmingdale, New York 11735		
	decimal ±.5 (.020)	Scale	Drawn By B.S. Approved By T.B.
Fractional ± .8 (.030)	Title "AAA" BATTERY NEGATIVE CONTACT		
Angular ± 3°	Date 06/07/19	Drawing Number BK-6179	