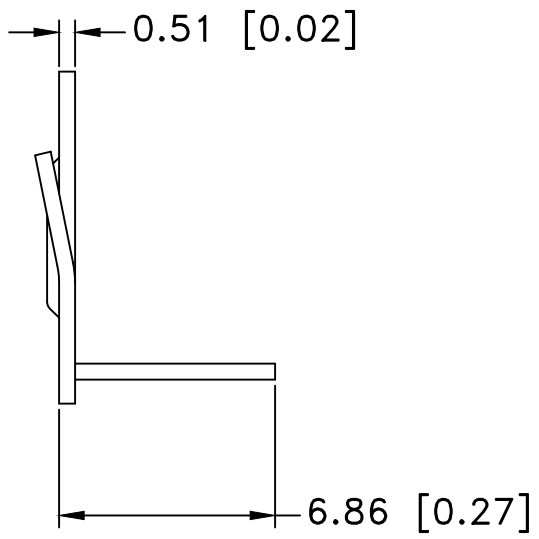
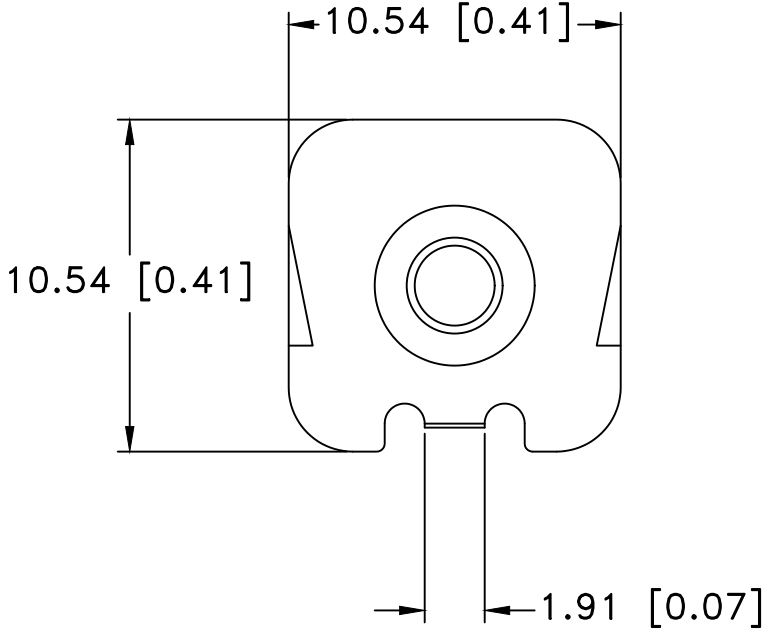



Date	SYM	REVISION RECORD	AUTH	DR.	CK.



NOTES:
 1. BASE PLATE: COLD ROLLED STEEL, NICKEL PLATED
 ROHS COMPLIANT

Tolerance (Except as noted)	 Memory Protection Devices, Inc 200 Broad Hollow Road, Farmingdale, New York 11735		
decimal ±.5 (.020)		Scale	Drawn By B.S.
Fractional ± .8 (.030)	Title "AAA" BATTERY POSITIVE CONTACT		
Angular ± 3°	Date 06/07/19	Drawing Number BK-6178	